

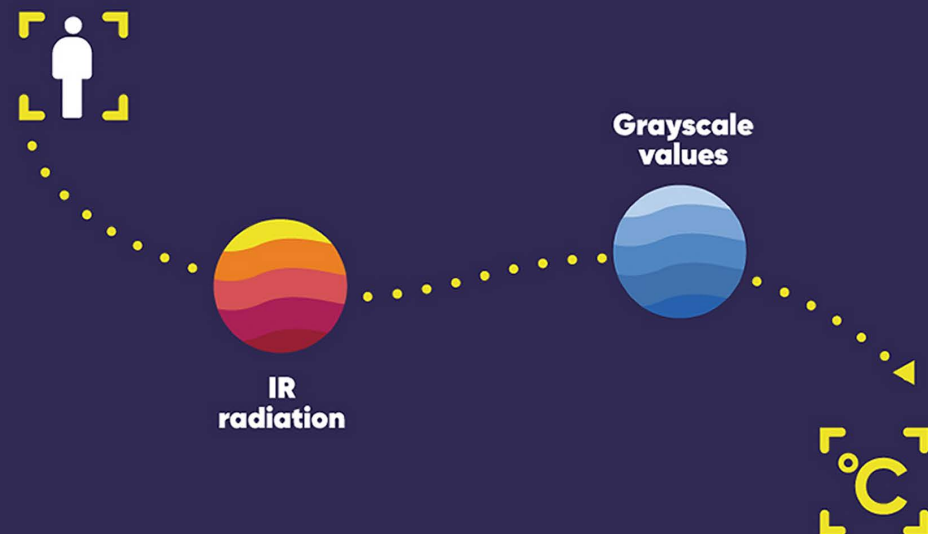
A thermal image of a person in a crowd, with a green box highlighting their head and a temperature reading of 97.7°F. Other people in the background are shown in various shades of blue and green, indicating lower temperatures.

# Hikvision Highly Accurate Thermographic Cameras

## SAFER, FASTER, SMARTER

With advanced detectors and algorithms, Hikvision's new Highly Accurate Thermographic Cameras can be used for immediate detection and preliminary screening of elevated skin-surface temperature with accuracy up to  $\pm 0.5^{\circ}\text{F}$  ( $0.3^{\circ}\text{C}$ ).

Disclaimer: Hikvision USA Inc. products depicted herein are not FDA approved medical devices and are not intended for use in the diagnosis of disease or other conditions, or in the cure, mitigation, treatment, or prevention of disease. When configured correctly, the Hikvision products discussed herein can identify elevated human skin-surface temperature relative to a sample population.

A diagram showing a queue of blue human silhouettes. The first person in the queue is highlighted with a white silhouette and a yellow dotted circle, indicating they are the focus of the measurement.

**High Efficiency**  
One second  
to detect temperature

**Increased Safety**  
Non-contact  
measurement  
from a distance

# Temperature Screening Solutions

## 1 Handheld Camera + Tripod + iVMS-4200 or Hik-Thermal (Mobile app)

Accuracy:  $\pm 0.9^{\circ}\text{F}$



With a Wi-Fi module, the TP21B handheld camera can connect to a PC with iVMS-4200, or a smartphone with the Hik-Thermal app, to notify operators when an elevated temperature is detected. It also features a built-in speaker for audible alarms.

## 2 Turret/Bullet Camera + Tripod/Bracket + iVMS-4200 and/or NVR + Laptop

Accuracy:  $\pm 0.9^{\circ}\text{F}$



The turret and bullet cameras feature smart detection to reduce false alarms caused by other heat sources. Up to 30 individuals can be detected and measured at once.

## 3 Turret/Bullet Camera + Blackbody Calibrator + Tripod/Bracket + iVMS-4200 and/or NVR + Laptop

Accuracy:  $\pm 0.5^{\circ}\text{F}$



Add the Hikvision blackbody calibration source to a turret or bullet camera solution to increase temperature measurement accuracy to  $\pm 0.5^{\circ}\text{F}$  ( $0.3^{\circ}\text{C}$ )

# Features of Solutions

## Smart Detection

Focuses temperature measurement areas on human bodies to avoid false alarms caused by other heat sources

## Advanced Algorithms

Achieve high accuracy with Hikvision's proprietary temperature measurement algorithms

## Bi-Spectrum Monitoring

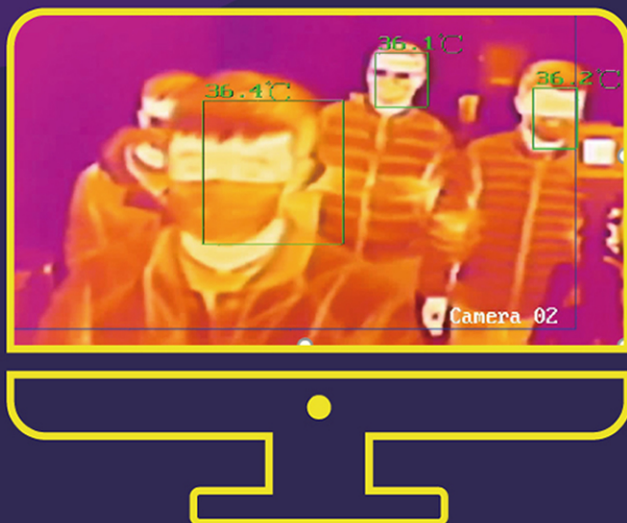
Provides both thermal and optical image channels apart from temperature measurement

## Embedded Audio Alarm

Triggers alarms to notify operators immediately when an abnormal temperature is detected

## One-Stop Solution

Hikvision offers an extensive product portfolio including thermal cameras, network switches, NVRs, monitors, etc.



## Operation Tips



Install the thermal camera in a windless, indoor environment



Draw a line on the floor to perform screening with an ideal distance between the camera and the tested persons

## Primary Applications



Education & Daycare



Healthcare Facilities



Essential Businesses

# Highly Accurate Thermographic Cameras

### DS-2TD2636B-13/P



Smart Detection

384\*288 thermal resolution  
13 mm thermal lens  
(Recommended camera-target distance 8.2-23 ft)  
4 MP optical camera with 6 mm lens

### DS-2TD2617B-6/PA



Smart Detection

160\*120 thermal resolution  
6 mm thermal lens  
(Recommended camera-target distance 4.9-9.8 ft)  
4 MP optical camera with 8 mm lens

### DS-2TD1217B-3/PA



Smart Detection

160\*120 thermal resolution  
3 mm thermal lens  
(Recommended camera-target distance 2.6-4.9 ft)  
4 MP optical camera with 4 mm lens

### DS-2TP21B-6AVF/W



Wi-Fi

160\*120 thermal resolution  
8 MP resolution optical camera  
6 mm thermal lens  
(Recommended camera-target distance 3.3-6.6 ft)

**HIKVISION®**